



Centre For Health Intervention and Policy Evaluation Research (HIPER)

2023

Annual Report





CONTENTS

Message from Directors	1
Our Vision and Mission	3
About HIPER	4
Our Partners	5
Key Events in 2023	7
Our Research	11
Presentations/Sharing by HIPER	15
Publications	17
Our Team	19
Contact Us	22

From our Director



2023 has been dubbed by many as the “Year of Travel Revenge” on both the corporate front as well as personal front. Staff of Centre for Health Intervention and Policy Evaluation Research (HIPER) have had our fair share of travels to present at international conferences or conduct courses overseas.

As we bid farewell to the remarkable year that was 2023, I am filled with immense gratitude and a sense of accomplishment in reflecting upon the achievements and collaborative efforts that have defined our journey.

The various events hosted by our centre have not only fostered meaningful connections but have also contributed to the advancement of healthcare intervention and policy evaluation research on a global scale. Your unwavering support and active participation in these endeavours have been pivotal to their success, and we are truly thankful for your commitment.

Our commitment to conducting impactful translational research that resonates with policymaking has remained steadfast. Throughout 2023, the centre has strived to bridge the gap between research and policy implementation, yielding outcomes that hold significant promise for the improvement of healthcare interventions and policies. A noteworthy illustration of this commitment is evident in our efforts to advance research on antimicrobial resistance through the comprehensive perspective of One Health.

As we transition into the new year, I look forward to building upon the achievements of 2023 and furthering our collaborative efforts. Your continued support remains crucial to our mission, and we are excited about the opportunities that lie ahead. A huge thank you too, to the dedicated and passionate staff of HIPER, and Senior Management of Saw Swee Hock School of Public Health, without whom we will not have achieved what we have achieved. Wishing you a prosperous 2024.

Associate Professor Wee Hwee-Lin

Director

Centre for Health Intervention and Policy Evaluation Research (HIPER)

From our Co-Directors



Happy 2024! 2023 was an exciting start of my first year in HIPER. I am thankful to have taken on the role as co-director and to work with a dedicated and skilled team. The evaluation projects that we have worked on in the past year have been eye-opening and insightful. I hope to continue to grow and improve the team, and to strengthen our relationships with more partners. That way, HIPER can continue to meaningfully contribute to the health and social care landscape in Singapore.

Assistant Professor Ian Ang Yi Han

Co-Director, Programme Evaluation (Quantitative), HIPER

The first year of working as co-director at HIPER has been enjoyable and fruitful. I have especially enjoyed working as part of an interdisciplinary team. This front row seat at the table, seeing first-hand how evidence-base informs and shapes practice has been inspiring. Working on helping to shape health policy across One Health sectors and to improve service delivery for vulnerable populations has been an honour. Growing the team from a start-up to a thriving group of qualitatively and mixed trained social and behavioural scientists has been a pleasure.



As the New Year stretches ahead, I look forward to adding mine and the HIPER's voice to new initiatives for policy and planning.

Assistant Professor Zoe Jane-Lara Hildon

Co-Director, Programme Evaluation (Qualitative), HIPER

Vision

Evidence Empower Decisions

Become the leading health technology assessment (HTA) centre in Asia that conducts high-quality HTA that contributes to policy making locally and in the region

Mission

01

In response to increasing demand for evidence-based policy decisions, support the stakeholders with the use of health economic evidence to guide policy decisions on health resource allocation.

02

Work with governments, global funders, NGOs and industry to perform applied health economics and outcome research.

03

Provide a platform for industry experts, academic institutions and stakeholders to come together and promote organic networking opportunities.

About HIPER

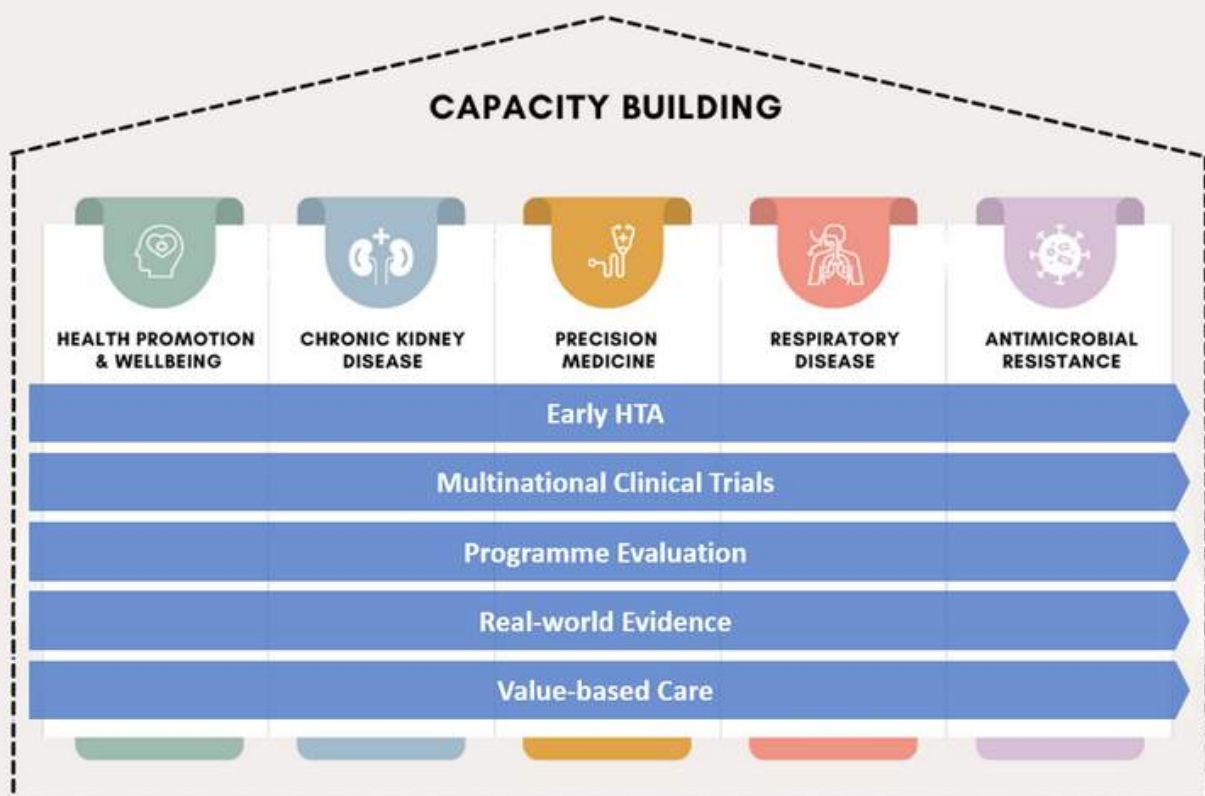
Who we are

Launched in 2019 within the Saw Swee Hock School of Public Health, HIPER upholds its vision “Evidence Empower Decisions” to strengthen HTA capacity for evidence-based health policy decision-making in developing countries. Our efforts to build HTA capacity entail a range of activities, including consulting services and advisory work, technical support for HTA research, capacity building education opportunities, and networking at domestic and international levels.

How we work

HIPER currently focuses on five areas within healthcare research: Health Promotion and Wellbeing, Chronic Kidney Disease, Precision Medicine, Respiratory Disease and Antimicrobial Resistance. We’ve refined our skills and built a strong multi-disciplinary team to approach our research areas in five ways: Early Health Technology Assessment (HTA), Multinational Clinical Trials, programme Evaluation, Real-world Evidence, Value-based Care.

HIPER'S PRIORITY AREAS



Our Partners

Regional and Global Partnerships

Academic institutions

- Australian National University
- Ewha Woman's University
- Hitotsubashi University
- London School of Hygiene and Tropical Medicine
- Mahidol Oxford Tropical Medicine Research Unit (MORU)
- Monash University
- Postgraduate Institute of Medical Education and Research (PGIMER)
- Shanghai Jiao Tong University School of Medicine
- Universiti Sains Malaysia
- University of York

Government agencies

- Health Intervention and Technology Assessment Program (HITAP)
- Ministry of Health (Bhutan)
- Ministry of Health and Welfare (Taiwan)
- The Department of Health (DOH), the Philippines

Non-profit organisations

- Hitachi Foundation, Japan
- National Health Foundation, Thailand

Our Partners

Local Partnerships

Academic institutions

- Duke-NUS Medical School
- Singapore-MIT Alliance for Research and Technology (SMART)
- Nanyang Technological University (NTU)

Government and its related agencies

- Ministry of Health (Singapore)
- MOH Office for Healthcare Transformation (MOHT)
- National Environment Agency
- National Parks Board
- Precision Health Research Singapore (PRECISE)
- PUB, Singapore's National Water Agency
- Singapore Food Agency

Industry

- Asia Pacific Medical Technology Association (APACMed)
- Becton Dickinson (BD)
- GSK
- Johnson & Johnson
- MSD
- Novartis Singapore
- Pfizer Singapore
- Singapore Association of Pharmaceutical Industries (SAPI)

Non-profit organisations

- Happee Hearts Movement
- TOUCH Community Services
- National Kidney Foundation Singapore (NKF)

Public Health Institutions

- Khoo Teck Puat Hospital (KTPH)
- KK Women's and Children's Hospital
- National Cancer Center Singapore (NCCS)
- National Centre for Infectious Diseases (NCID)
- National University Cancer Institute, Singapore (NCIS)
- National University Hospital (NUH)
- National University Heart Centre, Singapore (NUHCS)
- National University Polyclinics (NUP)
- NUHS Centre for Innovation in Healthcare (CIH)
- Singapore General Hospital (SGH)
- Tan Tock Seng Hospital (TTSH)

Key Events in 2023

Events | Workshops | HIPER Courses

	Event Title	Dates
1	SHORT COURSE: Simulation for Health Technology Assessment	12 Jan - 13 Apr
2	SHORT COURSE: Applied Health Econometrics for Health Technology Assessment	14 Jan – 18 Feb
3	PUBLIC LECTURE: Using Distributional Cost-Effectiveness Analysis to Reduce Health Inequality	21 Feb
4	Health Intervention and Policy Evaluation Research (HIPER) Symposium 2023	23-24 Feb
5	PUBLIC LECTURE: Lifecourse Microsimulation of Childhood Policy Impacts On Health, Wellbeing and Inequality	27 Feb
6	SHORT COURSE: Incorporating Economic Evaluation in your Research Grant Proposal	13-14 Jun
7	PUBLIC LECTURE: Simulation Modeling to Inform Value-Based Health Care Decisions	16 Jun

Key Events in 2023

Events | Workshops | HIPER Courses

	Event Title	Dates
8	SHORT COURSE: Evidence Synthesis for Health Technology Assessment	18 Aug – 17 Nov
9	PUBLIC LECTURE: Accounting for Health Opportunity Costs In Key Decisions in Healthcare Resource Allocation	22 Aug
10	PUBLIC LECTURE: Estimating the Returns To Health-Related Spending	22 Aug
11	Pre-conference workshop at HTAsiaLink	4 Sep
12	International Stakeholder Engagement Workshop on Antimicrobial Resistance (AMR) Modelling using a One Health Approach	26 Sep - 27 Sep
13	PUBLIC LECTURES: Antimicrobial Resistance Modelling using a One Health Approach	27 Sep

Event Highlights

HIPER symposium 2023

On 23-24 February, the HIPER symposium was held, with the theme "Empowering Stakeholders and Advancing HTA Practice" which sought to engage stakeholders in the entire healthcare ecosystem from innovators to healthcare practitioners and patients and equip them with the knowledge to contribute to the HTA process. The symposium featured a stellar line up of local and overseas speakers, who shared their insights on:

1. The reimbursement for medical devices and digital health technologies, which is a relatively new area of HTA work that many has encountered challenges in.
2. How healthcare professionals can be empowered by HTA, reinforcing the symbiotic relationship between clinical practice and HTA to bring about greater benefits to the patients

The 2-day symposium garnered around 70 attendees on each day, with largely local participants and a few overseas participants from Brunei and Thailand. The attendees were mainly from government agencies, the private sector and healthcare institutions.



Event Highlights

International Stakeholder Engagement Workshop on Antimicrobial Resistance (AMR) Modelling using a One Health Approach

The stakeholder engagement workshop was held with the aims of (1) providing stakeholders with a landscape overview of existing research to estimate AMR socioeconomic burden using a One Health approach; and (2) aligning and confirming the policy questions and modelling approach, as well as exploring data availability that will feed into the model for the estimation of AMR socioeconomic burden in Singapore. The closed-door event was attended by members of the academia and public health agencies, international experts in using the One Health Approach in AMR, and the One Health agencies in Singapore - the Ministry of Health (MOH), the National Environment Agency (NEA), the National Parks Board (NParks), the Singapore Food Agency (SFA) and PUB, Singapore's National Water Agency. The workshop was a fruitful one, with many insights gained in ensuring the building of a model that can be contextualized to Singapore. In conjunction with the workshop, international experts conducted a series of public talks focusing on AMR modeling through the One Health Approach to raise awareness of the subject.



Our Research

Project Title

Funder

Addressing the challenges in case identification, Cascade Screening, genetic testing and treatment in Familial Hypercholesterolemia (FH) – a cross-cluster clinical implementation programme by FHCARE
PRECISE

Cost-Effectiveness of Non-Pharmaceutical Interventions (NPI), Vaccination and the Combination of NPI and Vaccination in Managing the COVID Pandemic
HIPER

An innovative and sustainable Early Intervention service for children with Autism Spectrum Disorders
MOH

Core real world dataset for economic evaluations of oncology drugs (RODEO)
NMRC

BREast Cancer Screening Tailored for Her (BREATHE)
PRECISE

COVID Collaborative project
Hitachi Fund Support for Research Related to Infectious Diseases

Clinical Implementation of Pre-emptive Pharmacogenomic Testing as a Precision Medicine Tool in Routine Clinical Practice in Singapore
PRECISE

Develop and Implement an Integrated Care Pathway to Improve Coronary Artery Bypass Graft Surgery (CABG) Outcome
MOH

Cost-effectiveness analysis for the Primary Technology Enhanced Care-Hypertension Scaling Programme
MOHT

Developing a paediatric nurse and allied health-led integrated continuum of care in Singapore
MOH

Our Research

Project Title

Funder

Economic burden of spinal muscular atrophy (SMA) costing

Novartis Singapore

Risk Assessment Tool Development and Evaluation of Services for People with Intellectual Disabilities (PWIDs) and their Carers

Happee Hearts Movement

ELectronic PHenotyping to Enhance Patient Access to Precision Medicine (ELPHA)

PRECISE

Sewage-based surveillance for rapid outbreak detection and intervention in Singapore

National Research Foundation Singapore (NRF)

Evaluation of the National Strategic Action Plan against Antimicrobial Resistance

Antimicrobial Resistance Coordinating Office (AMRCO), National Centre for Infectious Disease (NCID)

Sustainable financing model for antibiotics access in Singapore

GSK, MSD, Pfizer

Evaluation of TOUCH Community Services' Reablement Programme

TOUCH Community Services

The socioeconomic impact of antimicrobial resistance in Singapore: A One Health perspective

NCID

Managing cavities in children and institutionalized elderly: cost-effectiveness and acceptance of silver diamine fluoride treatment

NMRC

Two-month Regimens Using Novel Combinations to Augment Treatment Effectiveness for drug-sensitive Tuberculosis (TRUNCATE-TB) Cost-effectiveness Analysis

NUS School of Medicine

Research Highlights



01 | Happee Hearts Movement (HHM)

The NUS socio-behavioural HIPER team has enjoyed the start of a two year journey working alongside Happee Hearts Movement (HHM) evaluating their unique service model of care delivery for adults with intellectual disabilities (AWID), aptly named IDHealth.

Despite extensive research conducted overseas in high-income, mostly western countries, through a deep dive Systematic Review the HIPER team has identified a paucity of empirical studies in Asia. Our work builds on existing evidence-base and seeks to extend and translate this to the Singapore context.

In the first study of its kind in Singapore, the HIPER team is leading a multi-sectoral effort, employing a series of mixed methods studies to inform the development of Risk and Referral tool for AWID, a Process Evaluation, and to establish a Cohort Study to sustainably monitor outcomes over the coming years.

Present milestones include synthesis of over n=160 primary studies and n=23 reviews identifying potential risk factors internationally that will be distilled for use and application to the local context to guide care and programme planning. Consensus building techniques to shape application of this knowledge repository have been carried out, kick-starting this work in 2024.

In addition, the team has developed a novel method to collect retrospective interview data informing the evaluation of the proposed service model. The method seeks to be inclusive of AWID's and their carer's voices. It builds on and simplifies longstanding qualitative applications of the life-grid method, supplemented by photo-elicitation, to enhance memory and sharing of health experiences before and after registration with IDHealth.

The HIPER team anticipates that this innovative method will become part of the teams' arsenal of 'fixes' when facing the common problem of how to capture experiences of care, months or years after the service was first received.

We are grateful to the IDHealth team, our study participants, and all the Key Informants taking part in our upcoming Focus Group work and Delphi for their ongoing support. We are confident our work will both advance research methodologies and related toolkits, as well as contribute to enhancing the services landscape for vulnerable populations in Singapore.

Research Highlights



02

Evaluation of the National Strategic Action Plan (NSAP) against Antimicrobial Resistance (AMR) in Singapore (2017-2023)

We are excited to be working closely with the Antimicrobial Resistance Coordinating Office (AMRCO) at the National Centre for Infectious Disease (NCID), the One Health sector and extended, secondary audiences to improve the national strategy for reduction of AMR in Singapore.

The NUS socio-behavioural HIPER team has conducted a rapid Process Evaluation of the existing NSAP's implementation. The evaluation has been scoped using an evaluation framework, which adapts and expands existing theoretical development undertaken by the study team lead [1]. We build on this through the application of the VALUES Framework, a scaled-up version of a previously published descriptive model, crafted to guide the complexity of implementing and evaluating AMR-reducing strategies within primary healthcare settings and beyond.

The VALUES Framework is being used to assess how Values and related activities on preventing the overuse and reducing the transmission of antibiotic-resistant pathogens, in line with the original national strategy, are Aligned within and across the One Health Sectors (human health, animal health, food and environment); whether related Liaison with secondary audiences, for instance education and engagement, are being effectively implemented; the ways in which the Use of monitoring and Evaluation can be enhanced through surveillance and research; and Sustainability built into prioritising future plans.

Focus groups, supplemented when necessary with interviews, were conducted with n=60 participants. This evaluation has been elevated by ensuring that both One Health Agencies (MOH, HPB, NEA, NParks, PUB and SFA) and secondary audiences such as healthcare professionals, vets, the animal farming / industry-driven communities were recruited into the study. Preliminary analysis has been shared and full analysis undertaken as our final reporting milestone approaches.

This project illustrates how theory-based analysis can guide pragmatic evidence-based thinking, a cornerstone propping up strategic policy and planning. We look forward to continuing our longstanding relationship with NCID as the New Year unfolds.

[1] Guo, H., Hildon, Z. J. L., Loh, V. W. K., Sundram, M., Ibrahim, M. A. bin, Tang, W. E., & Chow, A. (2021). Exploring antibiotic prescribing in public and private primary care settings in Singapore: a qualitative analysis informing theory and evidence-based planning for value-driven intervention design. *BMC Family Practice*, 22(1). <https://doi.org/10.1186/s12875-021-01556-z>

Presentations/Sharing by HIPER

Congratulations to HIPER team members who shared their knowledge and findings at various events around the world!

International Conference on Prevention and Infection Control 2023, Geneva

- “Economic Evaluation of Using Wastewater Surveillance to Inform Policy Decisions at The Early Phase of a Pandemic” - A/P Wee Hwee Lin
- “Impact of COVID-19 Responses on Antimicrobial Resistance in a Tertiary Care Hospital in Singapore” - Ms Celestine Cai

Asia-Pacific Quadripartite One Health Workshop, Bangkok

Participated in the discussion on multi-sectoral collaboration on One Health at country and regional levels that is beyond a focus on infectious diseases
- A/P Wee Hwee Lin

Anniversary Celebration Global Health Programme of Duke Kunshan University, Suzhou

Shared about public health challenges of antimicrobial resistance and current efforts at incentivising the pharmaceutical industry to invest in research and development of new antibiotics - A/P Wee Hwee Lin

Genomics Forum by PRECISE in collaboration with Science Centre Singapore

Highlighted the game-changing potential of pharmacogenomics in personalized medicine - A/P Wee Hwee Lin

Real-World Evidence Workshop by The Gallen Centre for Health and Social Policy, Kuala Lumpur

Shared challenges of using RWE in HTA, as well as the importance of this practice in supporting regulations and reimbursements, especially for rare diseases - A/P Wee Hwee Lin

Presentations/Sharing by HIPER

Congratulations to HIPER team members who shared their knowledge and findings at various events around the world!

ISPOR Europe 2023, Copenhagen

- Led a conversation on AI and its power in Health Economics and Outcomes Research (HEOR) and highlighted progress in the use of real-world data by Asian HTA agencies - A/P Wee Hwee Lin
- Panel discussion centred on point-of-care diagnostics, particularly on challenges of incorporating the contribution of antimicrobial resistance reduction by such technologies into economic evaluations - Alec Morton
- Presented on “indirect costs faced by Spinal Muscular Atrophy (SMA) caregivers” to inform reimbursement policies - Ms Amelia Lim

Union World Conference on Lung Health 2023, Paris

Presented on cost-minimization analysis of the trial data and a modelling investigation to determine how health economic outcomes can be optimized for the Truncate-TB strategies - Dr Elisabeth Schaffer

Mount Hood Asia Diabetes Challenge and Society for Medical Decision Making Asia Conference 2023, Kuala Lumpur

Discussed on the topic of "How we can strengthen health economics/ health technology assessment in Asia" - A/P Wee Hwee Lin

Health Technology Assessment International Symposium, Tokyo

Presented on COVID-19 diagnostic testing and border control policies in Singapore - A/P Wee Hwee Lin

Publications

Dulsamphan, T., Juntama, P., Suwanpanich, C., Isaranuwatthai, W., Silzle, M., Poonmaksatit, S., Boonsimma, P., Shotelersuk V., Visudtibhan, A., Lusawat, A., Kamolvisit, W., Kapol, N., Lochid-amnuay, S., Sribundit, N., Samprasit, N., Morton, A., Teerawattananon, Y. (forthcoming) Can knowledgeable experts assess costs and outcomes as if they were ignorant? An experiment within precision medicine evaluation. *International Journal of Technology Assessment in Health Care*. doi:10.1017/s0266462323002714

Hutcheson, M., Morton, A., Blair, S. (forthcoming) Actualisations of Agroecology among Scottish Farmers. *Systemic Practice and Action Research. Agroecology and Sustainable Food System*. doi: 10.1080/21683565.2023.2270493

Hutcheson, M., Morton, A., Blair, S. (forthcoming) Critical Systems Heuristics: a Systematic Review. *Systemic Practice and Action Research*. doi: 10.1007/s11213-023-09665-9

Hutcheson, M., Morton, A., Blair, S. (forthcoming) Exploring Perspectives on Agroecological Transition in Scotland with Critical Systems Heuristics. *Systemic Practice and Action Research*. doi: 10.1007/s11213-023-09663-x

Bufali, M. V., Calò, F. Morton, A., Connelly, G. (forthcoming) Scaling social innovation: a cross-cultural comparative study of school-based mentoring interventions. *Journal of Social Entrepreneurship*. doi: 10.1080/19420676.2023.2213715

Lombardo, C., Guo, L, Solomon, S., Crepez-Keay, D., McDaid, S., Thorpe, L., Martin, S., John, A., Morton, A., Davidson, G., Kousoulis, A. A., Van Bortel, T. (2023) Inequalities and mental health during the Coronavirus pandemic in the UK: a mixed-methods exploration. *BMC Public Health*. 23(1):1830. doi: 10.1186/s12889-023-16523-9

Bufali, M. V., Morton, A., Connelly, G. (2023) Putting school-based mentors' experience into context: a mixed-methods cross-country comparison. *International Journal of Mentoring and Coaching in Education*. 12(3). 251-266. doi: 10.1108/ijmce-09-2022-0080

Sheikh, N., Sultana, M., Sarker, A. R., Morton, A. (2023) Equity assessment of maternal and child healthcare benefits utilization and distribution in public healthcare facilities in Bangladesh: a benefit incidence analysis. *Population Health Metrics*. 21(12). doi: 10.1186/s12963-023-00312-y

Collins, M., Mazzei, M., Baker, R, Morton, A., Frith, L., Syrett, K., Leak, P, Donaldson, C. (2023) Developing a combined framework for priority setting in integrated health and social care systems. *BMC Health Services Research* 23(879) doi: 10.1186/s12913-023-09866-x

Ghatkar, S., Arulselvan, A., and Morton, A. (2023) Solution Techniques for Bi-level Knapsack Problems . *Computers and Operations Research* 159. doi: 10.1016/j.cor.2023.106343

Bufali, M. V., Connelly, G., Morton, A. (forthcoming). Examining holistically the experiences of mentors in school-based programs: a Logic Analysis. *Journal of Community Psychology*. doi: 10.1002/jcop.22991

Megiddo, I., Blair, S., Sabaei, D., Ruiz, F., Morton, A. (2023) An evaluation framework study assessing the role, applicability, and adherence to good practice of planning support tools for allocation of development aid for health in low- and middle-income countries. *BMJ Open*. 13(7) doi: 10.1136/bmjopen-2022-069590

Cai, C. G. X., Lim, N. W.-H., Huynh, V. A., Ananthakrishnan, A., Dabak, S. V., Dickens, B. S. L., Faradiba, D., KC, S., Morton, A., Park, M., Rachatan, C., Sittimart, M., Wee, H.-L., Lou, J., & Teerawattananon, Y. (2023). Economic Analysis of Border Control Policies during COVID-19 Pandemic: A Modelling Study to Inform Cross-Border Travel Policy between Singapore and Thailand. *International Journal of Environmental Research and Public Health*, 20(5), 4011. <https://doi.org/10.3390/ijerph20054011> doi: 10.3390/ijerph20054011

Meadows, D., Maclaren, J., Morton, A., Ross, D. (2023) A Novel and Practical Care Process Framework to Inform Model of Care Development. *Healthcare Management Forum*. 36(4) 249-255 doi: 10.1177/0840470423115721

Brar, S., Kaur, G., Muniyandi, M., Karikalan, N., Bano, H., Bhansali, A., Jain, S., Kumari, S., & Prinja, S. (2023). Cost of screening, out-of-pocket expenditure & quality of life for diabetes & hypertension in India. *The Indian journal of medical research*, 157(6), 498–508. https://doi.org/10.4103/ijmr.IJMR_389_20 doi: 10.4103/ijmr.IJMR_389_20

Maharjan, J., Pandit, S., Johansson, K. A., Khanal, P., Karmacharya, B., Kaur, G., & Aryal, K. K. (2023). Effectiveness of Interventions for Emergency Care of Hypoglycaemia and Diabetic Ketoacidosis: A Systematic Review. *Diabetes Research and Clinical Practice*, 111078. doi: 10.1016/j.diabres.2023.111078

Bayani, D. B., Lin, Y. C., Ooi, M. G., Tso, A. C. Y., & Wee, H. L. (2023). Real-world utilization and healthcare costs for multiple myeloma: A retrospective analysis of patients in Singapore. *EJHaem*, 4(4), 1013–1018. doi:10.1002/jha2.798

Bayani, D. B., & Wee, H. L. (2023). Implementing outcomes-based risk-sharing agreements: an integrative review of applications in blood cancer in the UK and beyond. *Expert Rev Pharmacoecon Outcomes Res*, 23(8), 879–889. doi:10.1080/14737167.2023.2240515

Chua, B., Lim, L. M., Ng, J. S. Y., Ma, Y., Wee, H. L., & Caro, J. J. (2023). Cost-Effectiveness Analysis of HPV Extended versus Partial Genotyping for Cervical Cancer Screening in Singapore. *Cancers (Basel)*, 15(6). doi:10.3390/cancers15061812

Kc, S., Lin, L. W., Bayani, D. B. S., Zemlyanska, Y., Adler, A., Ahn, J., ... Wee, H. L. (2023). What, Where, and How to Collect Real-World Data and Generate Real-World Evidence to Support Drug Reimbursement Decision-Making in Asia: A reflection Into the Past and A Way Forward. *Int J Health Policy Manag*, 12, 6858. doi:10.34172/ijhpm.2023.6858

Khan, B. A., Tagore, R., Rastogi, S., Hua, Y., See, V. W., Qu, X., ... Cai, C. G. X. (2023). The Impact of COVID-19 Infection Control Measures on End-Stage Renal Disease Patients in a Community Hemodialysis Setting. *Cureus*, 15(8), e43114. doi:10.7759/cureus.43114

Chen, W., Wong, N. C. B., Wang, Y., Zemlyanska, Y., Butani, D., Virabhak, S., ... & Teerawattananon, Y. (2023). Mapping the value for money of precision medicine: a systematic literature review and meta-analysis. *Frontiers in Public Health*, 11. doi: 10.3389/fpubh.2023.1151504

Lou, J., Lim, N. W., Cai, C. G. X., Dickens, B. S. L., Huynh, V. A., & Wee, H. L. (2023). Cost benefit analysis of alternative testing and quarantine policies for travelers for infection control: A case study of Singapore during the COVID-19 pandemic. *Front Public Health*, 11, 1101986. doi:10.3389/fpubh.2023.1101986

Tan, S. Y. X., Padmapriya, N., Bernard, J. Y., Toh, J. Y., Wee, H. L., Tan, K. H., ... Müller-Riemenschneider, F. (2023). Cross-sectional and prospective associations between children's 24-h time use and their health-related quality of life: a compositional isotemporal substitution approach. *Lancet Reg Health West Pac*, 41, 100918. doi:10.1016/j.lanwpc.2023.100918

Ang, I. Y. H., Wang, Y., Tyagi, S., Koh, G. C. H., & Cook, A. R. (2023). Preferences and Willingness-to-Pay for A Blood Pressure Telemonitoring Program Using A Discrete Choice Experiment. *npj Digital Medicine*, 6(176).doi:10.1038/s41746-023-00919-3

Wang, Y., Low, F. Z., Low, Y. Y., Lai, H. S., Lim, J. H., Yeow, C. H., & Teerawattananon, Y. (2023). Using early health economic modeling to inform medical innovation development: a soft robotic sock in poststroke patients in Singapore. *International Journal of Technology Assessment in Health Care*, 39(1), e4. doi:10.1017/S026646232200335X

Chavarina, K. K., Faradiba, D., Sari, E. N., Wang, Y., & Teerawattananon, Y. (2023). Health economic evaluations for Indonesia: a systematic review assessing evidence quality and adherence to the Indonesian Health Technology Assessment (HTA) Guideline. *The Lancet Regional Health-Southeast Asia*, 13. doi: 10.1016/j.lansea.2023.100184

Chen, W., Wang, Y., Zemlyanska, Y., Butani, D., Wong, N. C. B., Virabhak, S., ... & Teerawattananon, Y. (2023). Evaluating the Value for Money of Precision Medicine from Early Cycle to Market Access: a comprehensive review of approaches and challenges. *Value in Health*. doi:10.1016/j.jval.2023.05.001

Luangasanatip, N., Painter, C., Pan-ngum, W., Saralamba, S., Wichaita, T., White, L., ... & Teerawattananon, Y. (2023). How to Model the Impact of Vaccines for Policymaking When the Characteristics are Uncertain: A Case Study in Thailand Prior to the Vaccine Rollout During the COVID-19 Pandemic. *Vaccine*.doi: 10.1016/j.vaccine.2023.06.055

OUR TEAM



**Assoc Prof Wee
Hwee-Lin**
Director



**Asst Prof Ian Yi Han
Ang**
Co-Director



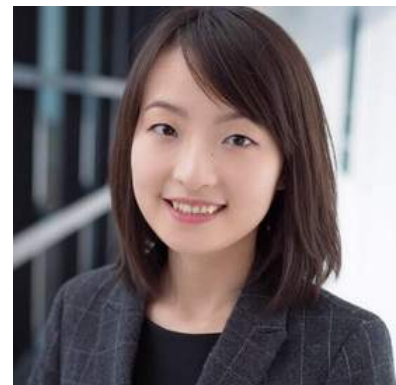
**Asst Prof Zoe Jane-
Lara Hildon**
Co-Director



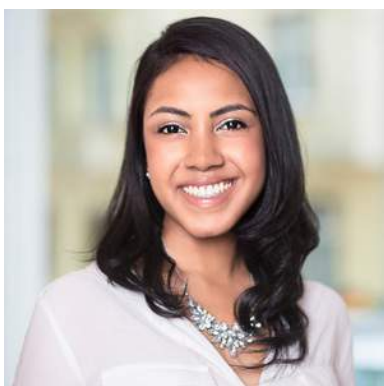
**Prof Yot
Teerawattananon**
Senior Advisor



**Prof Alec
Morton**
Faculty



**Asst Prof
Chen Wenjia**
Faculty



**Asst Prof
Kiesha Prem**
Faculty



**Asst Prof
Wang Yi**
Faculty



Ms Chua Hui Lan
Centre Manager

OUR TEAM

Health Technology Assessment Team



Dr Elisabeth Schaffer

Senior Research Fellow



Dr Lou Jing

Senior Research Fellow



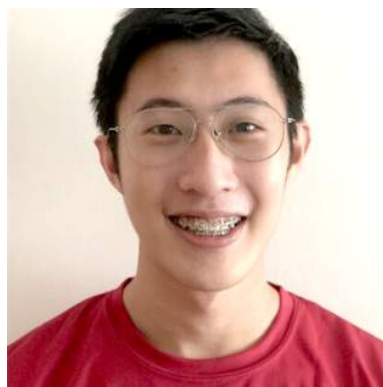
Dr Gunjeet Kaur

Research Fellow



Dr Sharon Tan

Research Fellow



Mr Clarence Ong

Research Assistant



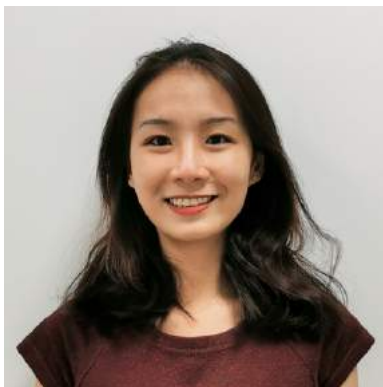
**Mr Muhammad Yusuf
Bin Osman**

Research Associate



Mr Shi Guoming

Research Assistant



Ms Amelia Lim

Research Assistant



Ms Celestine Cai

Research Associate

OUR TEAM

Health Technology Assessment Team



Ms Jamaica Briones

Research Associate



Ms Raina Wadhwa

Research Associate

Programme Evaluation Team



**Dr Shahmir Hassan
Ali**

Research Fellow



**Ms Cheng Hooi
Swang**

Research Associate



Ms Xie Jiajing kim

Research Associate



Ms Felicia Chan

Research Assistant



Mr Lucas Puah

Research Assistant



**Mr Muhammad
Azamuddin Bin Aman**

Research Assistant



CONTACT US



Saw Swee Hock School of Public Health
Tahir Foundation Building
National University of Singapore
12 Science Drive 2, #10-01
Singapore 117549



hiper@nus.edu.sg



<https://hiper.nus.edu.sg>



<https://www.linkedin.com/company/hiper-nus>