

Master of Public Health (MPH)

Turning discovery into healthier
communities through education,
research and partnership



The NUS Public Health Advantage

Designed for aspiring public health professionals like you, the MPH programme is a gateway to a fulfilling and impactful career that transcends boundaries, shapes healthier communities, and transforms lives.



Top Ranked University in Asia

National University of Singapore is ranked #1 in Asia in the QS World University Rankings 2024.



Global Exposure

Broaden perspectives through international collaborations, exchange programmes, and research projects. Gain insights from global experts on addressing complex public health challenges in today's interconnected world.



Affordable Financing

Tuition fees are highly subsidised up to 70% for both international and local students. **Scholarships and financial aid** covering tuition fees and stipends are also available.



Interdisciplinary Curriculum

Holistic and cutting-edge **curriculum** rooted in evidence-based approaches with collaborative learning methodologies. Develop competencies across diverse fields such as epidemiology, biostatistics, and health policy and management.



World-Class Faculty & Research

Benefit from the extensive knowledge vault of our global faculty members. Immerse in a hands-on learning experience with an emphasis on translating evidence-based research into real-world outcomes.



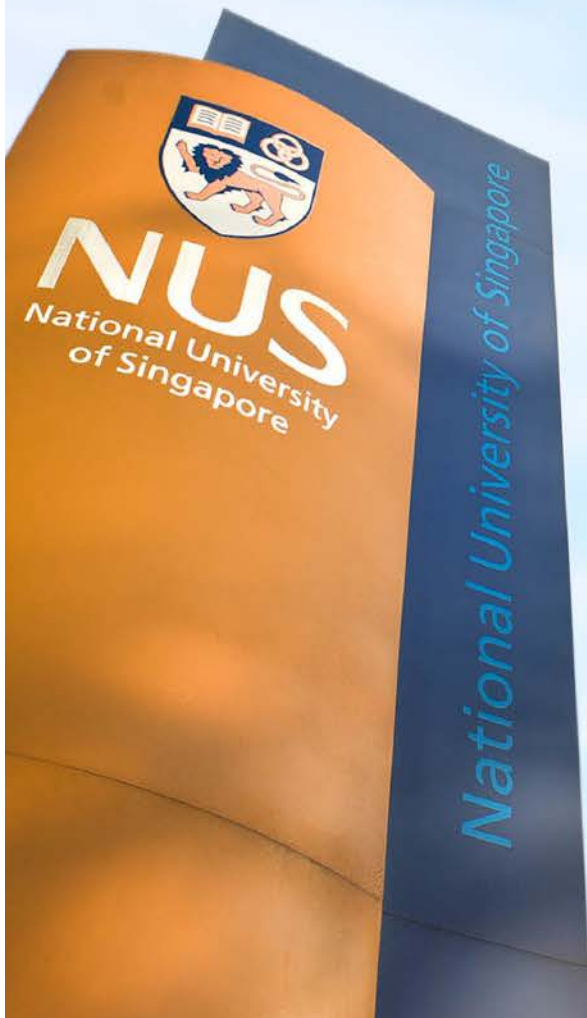
International Alumni Community

Tap on the expertise of our family of alumni from over 30 countries who have made significant contributions to public health globally.



Career Advancement

Open doors to rewarding career opportunities. Graduates have gone on to assume leadership positions in vast array of organisations including government agencies, NGOs, hospitals, and pharmaceuticals.



Tuition Fees

Residency	Subsidised Fee (Full Time)	Non-Subsidised Fee (Full Time)
Singapore Citizens	\$23,500	\$93,011
Singapore Permanent Residents	\$23,550	\$93,213
International Students	\$27,700	\$93,213

Part-time programmes are available for local candidates, click [here](#) for more information on tuition fees.



Disciplinary Competencies

Epidemiology

Health Policy
and Systems

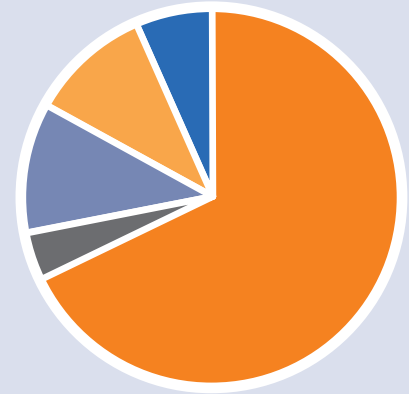
Qualitative
and
Quantitative
Methods

Social and
Behavioural
Sciences

A Global Ensemble of Talent



MPH Class Profile



- Asia Pacific
- Middle East
- Africa
- North America
- Europe

Alumni Spotlight: Leadership in Public Health

“

It is a great joy to learn, as an alumnus, at the National University of Singapore, one of the finest universities in the world, and an outstanding leader in education, research and innovation.

The knowledge I learned in NUS has helped my career in public health in Hong Kong and later in the World Health Organization. ”



Dr Margaret Chan, Class of 1985

*Emeritus Director-General of the World Health Organization (WHO),
Founding Dean of Vanke School of Public Health at Tsinghua University*

Where Our Graduates Work



Admissions Calendar



	Aug - Nov 2023	Jan - May 2024	Jul 2024 - Dec 2025
Full Time (Aug Intake)	MPH & MPH Scholarship Application	Scholarship Assessment & Interviews	Core Courses (24 units) + Elective Courses (24 units)

- Applications are open from 1 Aug 2023 to 15 Nov 2023.
 - Full-time students are expected to complete the programme within 1.5 years (normal candidature duration). The minimum candidature is 12 months and the maximum candidature is 24 months.
 - Click [here](#) for more information on the application process.
 - Click [here](#) for English language requirements for International Applicants.
- For enquiries, please email GDC_SPH@nus.edu.sg.

Admission Requirements

Non-medical applicants

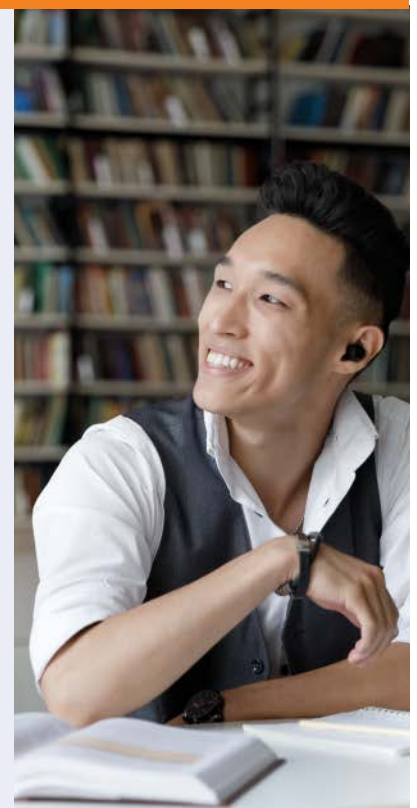
- Good Honours degree or equivalent
- Two years of work experience in public health / health promotion / health administration / occupational and environmental health / clinical research

Medically qualified applicants

- MBBS or equivalent
- One year of general clinical experience, excluding housemanship (Applicable to Singapore-trained doctors only)
- One year of work experience in public health / health administration / occupational and environmental health or having entered clinical specialty training

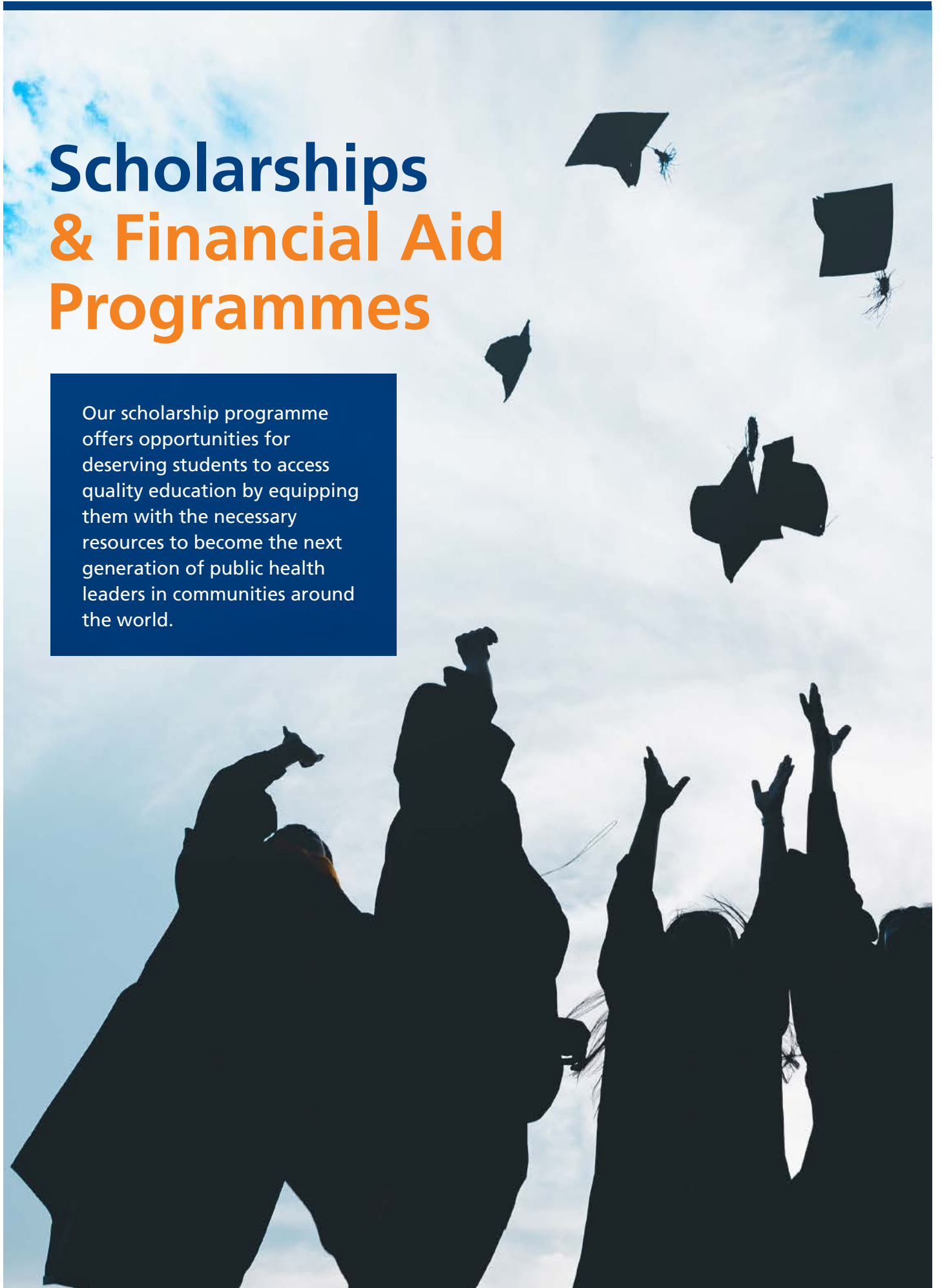
OR

Enrolment in the NUHS Preventive Medicine Residency programme



Scholarships & Financial Aid Programmes

Our scholarship programme offers opportunities for deserving students to access quality education by equipping them with the necessary resources to become the next generation of public health leaders in communities around the world.



TL Whang Foundation Master of Public Health Scholarship

The prestigious scholarship provides for full tuition fees and a monthly stipend to the most deserving candidates from Thailand and Vietnam, in particular candidates who demonstrate potential for community impact.

Benefits:

- Full tuition fees
- Monthly stipend

Requirements:

- For full-time candidates
- Applicable to Thailand and Vietnam nationals only



Saw Swee Hock Master of Public Health Scholarship

Named in honour of the late Professor Saw Swee Hock, the scholarship embodies his vision of empowering outstanding public health professionals. Up to three scholarships will be awarded by the School.

Benefits:

- \$15,000 towards tuition fees

Requirements:

- For full-time candidates
- Display outstanding academic excellence

SSHSPH Master of Public Health Fellowship

The fellowships recognise outstanding MPH candidates who have demonstrated academic excellence, professional distinction, passion for innovation and fostering healthier communities.

Benefits:

- Full or partial tuition fees
- Stipend*

Requirements:

- For full-time candidates
- Eligibility is based on merit and needs
- Display of academic excellence, professional distinction, and exceptional leadership qualities

**Subject to review by the Scholarship Committee*

Wu Yu Lin Master of Public Health Scholarship

Named in memory of the late Wu Yu Lin and in honour of her father, the late Dr Wu Lien-Teh, the scholarship embodies Dr Wu's dedication to public health as well as his heroic efforts in dealing with the Manchurian pneumonic plague of 1910–11, earning him the title "The Plague Fighter".

Benefits:

- \$15,000 towards tuition fees

Requirements:

- Preferably, not exclusively, medically-trained applicants
- Singapore Citizen or Permanent Resident

Mr and Mrs Chen Sing Wu Bursary

The bursary, named in honour of the late Mr and Mrs Chen Sing Wu, aims to empower and provide opportunities for future leaders in public health.

Benefits:

- Up to full tuition fees with stipends

Requirements:

- Financially needy Singapore Citizens

Scholarships availability may vary over time. Please visit [Scholarships and Financial Aid](#) or the most up-to-date information or email GDC_SPH@nus.edu.sg to enquire.

Hear From Our Scholar



“ **Studying MPH at NUS has opened doors of knowledge and opportunities for me.** My once-in-a-lifetime experience at the Saw Swee Hock School of Public Health has guided my approach to solve complex public health issues and challenges at work. ”

Erwyn Ooi Chin Wei, Class of 2021
SSHSPH Master of Public Health Fellowship
Principal Assistant Director, Ministry of Health, Malaysia



NUS Public Health Welcomes You



About Saw Swee Hock School of Public Health, National University of Singapore (NUS)

The NUS Saw Swee Hock School of Public Health is Singapore's first and only national school for public health. Built upon more than seven decades of experience in research, education, and practice, the School is a leader in advancing public health knowledge, developing public health leaders and transforming health practices in Asia.

Through the [Global Health](#) programme, the School has strong alliances and partnerships with governments, public health agencies, and academic institutions from around the world, including the London School of Hygiene & Tropical Medicine and Tsinghua University Vanke School of Public Health, to contribute to capacity building to address global health challenges.

