

# Tobacco control and HTA in Taiwan

Jasmine R. F. Pwu

Director of Division of HTA,  
CDE, Taiwan

# Q1. Tobacco control policy in Taiwan

# Feature Events of Tobacco Control in Taiwan

Date	Event
1987	Three-Year No-smoking Campaign
1990	DOH implemented the "Five-Year Tobacco Control Plan for the Taiwan Region"
1997. 03. 19	Issuance of a Presidential Decree ratifying the <i>Tobacco Hazards Prevention Act</i> and its implementation on September 19 of the same year
2002	Collection of <b>tobacco health and welfare surcharge</b> (NT\$ 5 should be levied on every pack of cigarettes)
2005. 03. 30	Issuance of a Presidential Decree approving country's participation in the <b>WHO FCTC</b> and signing of the membership commitment document
2006	<i>Tobacco and Alcohol Tax Act</i> was amended to raise the tobacco health and welfare surcharge to <b>NT\$ 10</b> per pack
2009	Amendment of <i>Tobacco Hazards Prevention Act</i> , expansion of the area of <b>no-smoking places</b>
2009	Welfare surcharge on tobacco products from NT\$ 10 per pack of cigarettes to <b>NT\$ 20</b>

# Policy for Tobacco Control

- **Reduction of Demand**

- Welfare tax on tobacco products
- Prohibition of smoking
- Warning Labels
- Smoking Cessation Assistance
- Education & Publicizing Campaign

- **Reduction of Supply**

- Prohibition of underage tobacco sales and selling
- Curbing illicit trade in tobacco products



© Warning information at point of sale for tobacco product



© Tobacco Warning Labels on Tobacco Products

# Welfare Tax on Tobacco Products

- The Health and Welfare Surcharge shall be imposed on tobacco products, the amount of which shall be as follows:
  - (1) Cigarettes: NTD 1,000 every one thousand sticks.
  - (2) Cut tobacco: NTD 1,000 every kilogram.
  - (3) Cigars: NTD 1,000 every kilogram.
  - (4) Other tobacco products: NTD 1,000 every kilogram.

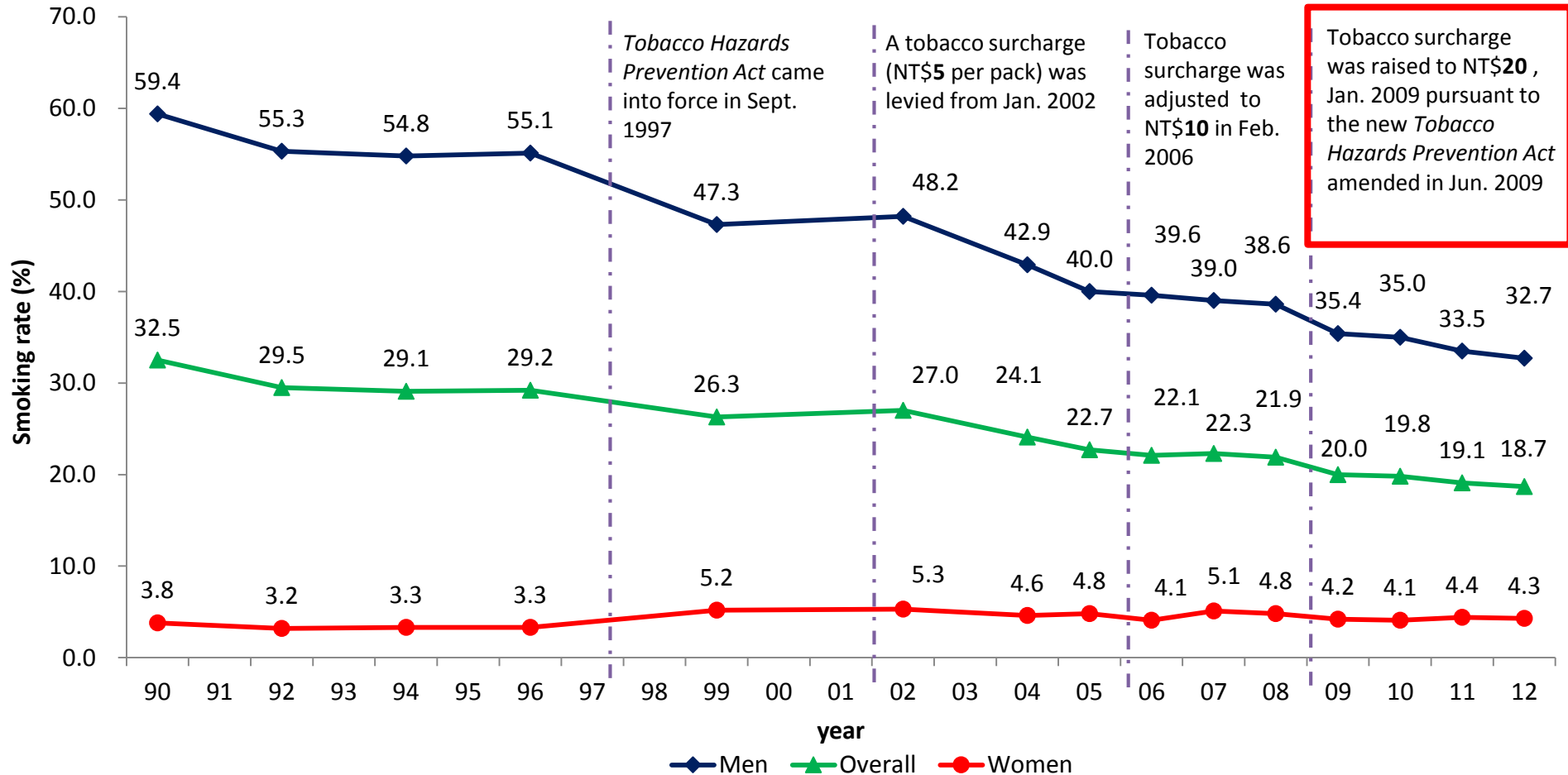
1 USD  $\doteq$  30 NTD

Q2. The evidence of policymakers  
rely on instead of HTA

# Research & Monitoring

- Research & Monitoring
  - Adult Smoking Behavior Survey
  - Global Youth Tobacco Survey
  - Tobacco Information Monitoring
  - Tobacco Consumption Monitoring
- Tobacco Ingredients Control and Regulations
  - Developments in Testing and Research of Tobacco Product
- Evaluation on Welfare Tax

# How Tax on Tobacco affect smoking rate?





Thank you for your attention!

Any question are welcome!